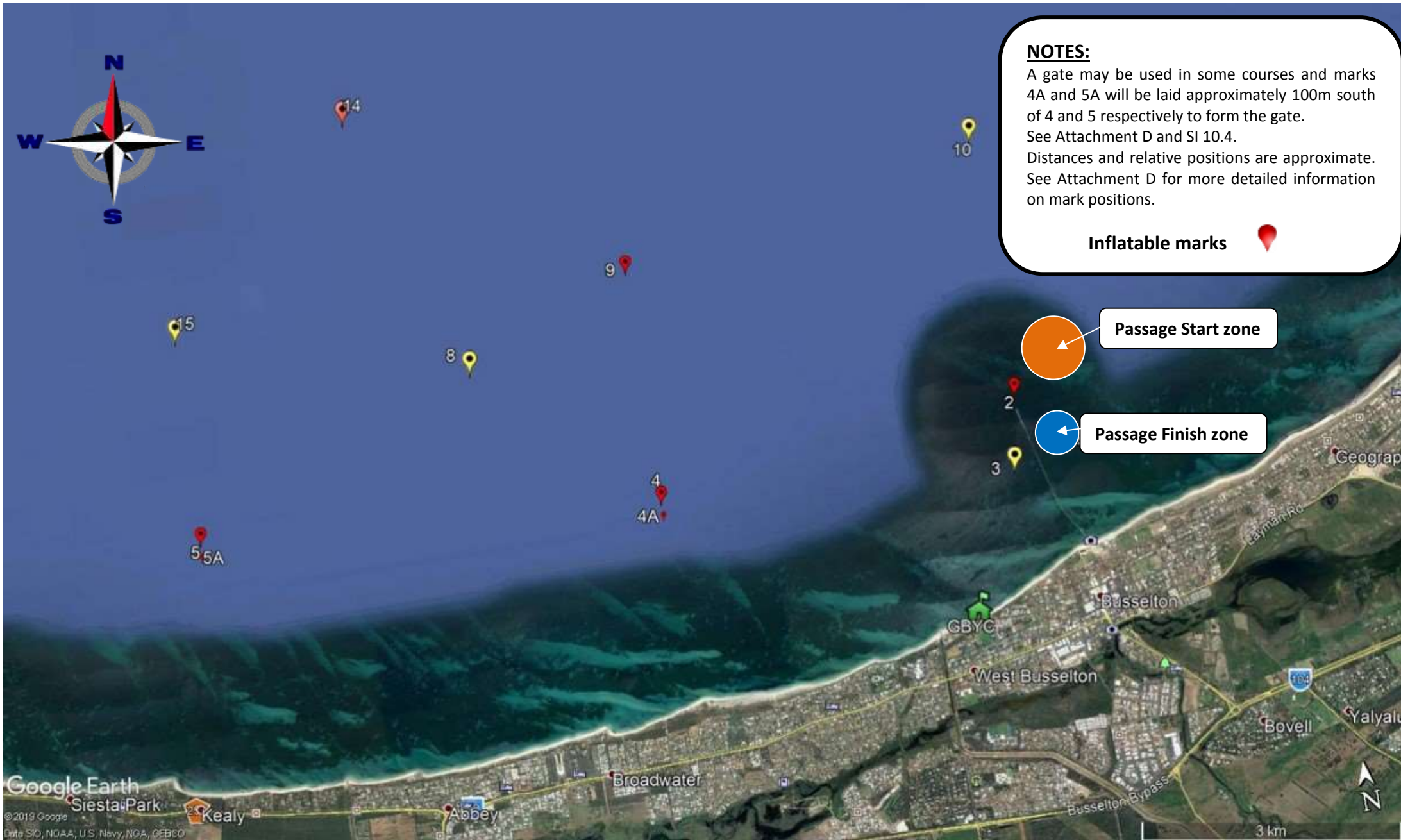


Attachment B – Racing Area



NOTES:

A gate may be used in some courses and marks 4A and 5A will be laid approximately 100m south of 4 and 5 respectively to form the gate. See Attachment D and SI 10.4. Distances and relative positions are approximate. See Attachment D for more detailed information on mark positions.

Inflatable marks



Passage Start zone



Passage Finish zone