

SAILING INSTRUCTIONS 2019/2020 season

The 2019/20 sailing season will commence on Saturday 5th October 2019 and carry through to Saturday 4th April 2020 inclusive. The sailing will be conducted by Geographe Bay Yacht Club Inc. on the waters of Geographe Bay.

1 Rules

The races will be governed by the "rules" as defined in the Yachting Australia Racing Rules of Sailing (RRS) 2017 / 2020, the 2018 / 2019 World Sailing Offshore Special Regulations and these sailing instructions of Geographe Bay Yacht Club Inc.

2 Entries

- 2.1 All skippers are required to complete the nomination form and pay the race nomination fee, prior to participating in any race, at least 30 minutes before the first warning signal. This can be done by credit card, direct debit, and cash or by indicating your intention of payment on the nomination form.
- 2.2 Nomination forms will be available outside the committee room or **nominate online** at www.gbyc.com.au. **Any skipper failing to nominate or pay race nomination fee, may be deemed a non-starter.**
- 2.3 The season race nomination fees for each class shall be:
SENIOR \$160 JUNIOR Nil DAILY Race Nomination \$20
- 2.4 Casual crew are required to pay \$175 towards senior membership fees. After ten (10) races they then must pay the balance of the full senior membership fee for the current season.
- 2.5 New Members are required to pay their membership by the fourth race of the Official Sailing Calendar season.
- 2.6 All competitors shall carry Australian Sailing Membership.

3 Notice to Competitors

Notices to competitors will be posted on the official notice board located outside the committee room. Division 1 & 2 will also be broadcast on VHF CH 77, Junior Racing will remain on VHF CH 77 ninety (90) minutes before and sixty (60) minutes before the first warning signal. Also, Division 1 boats will be notified by text message from class rep.

4 Changes to Sailing Instructions

Any change to the Sailing Instructions will be posted not less than one (1) hour before the first race it will affect, except that any change in the Schedule of Races will be announced and posted by 1800 hours on the day before it will take effect and will be broadcast as in Sailing Instruction 3.

5 Signals Made Ashore

- 5.1 Signals made ashore will be displayed on the control tower signal mast at the Western end of the main clubhouse.
- 5.2 When flag AP is displayed ashore, '1 minute' is replaced with 'not less than 30 minutes' in Race Signal AP.

6 Schedule of Races

- 6.1 Races are scheduled as per the Sailing Calendar.
- 6.2 When more than one race will be held on the same day, the Warning Signal for each succeeding race will be made as soon as practicable.

7 Class Flag

The class flag(s) will be as follows:

Division 1	Red over yellow over red	- Naval numeral flag 1
Division 2 / J&M	Yellow over red over yellow	- Naval numeral flag 2
Sharpies	Yellow kangaroo insignia on green background	
Mixed Cats	Black M on yellow background	
Lasers	Red Laser insignia on white background	
Tasars	Red Tassar insignia on white background	
Pelicans	Black pelican on white background	

Divisions 1 & 2 shall also fly their class flag on the backstay or shrouds whilst racing.

8 The Course

- 8.1 The diagrams below show the courses including the order in which marks are to be passed and the side marks are to be passed for a Port Course.
- 8.2 Courses where marks will be passed to Port will be signalled by a red flag. Courses where marks will be passed to Starboard will be signalled by a green flag. The flag will be displayed by the Start Boat no later than the warning signal of the class that is starting.
- 8.3 When there is a gate, boats shall sail between the gate marks from the direction of the previous mark and round either gate mark.
- 8.4 All boats shall proceed from the final mark shown on the course diagram to the Southern Seas Buoy, which is a yellow spar buoy with blue bands, approximately 300 metres east of the finishing line. This mark is to be rounded to starboard before proceeding to the finish line.
- 8.5 The course to be sailed will be signalled by Course 'A' or 'B' Flag and a numeral pennant displayed on the Start Boat no later than the warning signal for the first class.
- 8.6 Divisions 1, 2, Sharpies and Mixed Cats will sail the outer courses.
- 8.7 Lasers, Tasars and Mixed monos will sail the inner courses.

Note: A windward clearance mark may be laid for the Patrons Cup, Cock of the Bay and Bill Steel Memorial and at the discretion of the race officer

Series (Divisions 1 & 2 only)

- Passage Series as per course sheets
- Geographe Series
 - Div. 1 Windward / Leeward or short passage race
 - Div. 2 Windward / Leeward or Triangle or short passage race
- Club Championship
 - Div. 1 Windward / Leeward or Triangle
 - Div 2 Windward / Leeward or Triangle

Series (all except Divisions 1 & 2)

- Championships Triangle or Windward / Leeward
- Geographe Series Triangle or Windward / Leeward
- Short course Series Windward / Leeward

All courses for the 2019/20 season for **Division 2 / J&M, Lasers and Mixed Monohull** fleets, shall be: Triangle - Course 1 or 2 or Windward / Leeward - Course 3 & 4 or short passage races. Courses to be sailed as scheduled if practical and may be altered in consultation with the Sailing Committee and the Race Officer.

9 Marks

TRIANGLE – PORT COURSE

Course 'A'
Yellow Flag, Black Letter

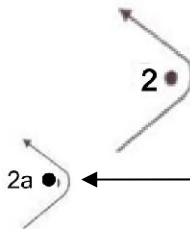
Leeward Mark Yellow Triangle
Div. 1 & 2, Sharpies, Mixed



Leeward Mark Red Triangle
Tasar, Laser

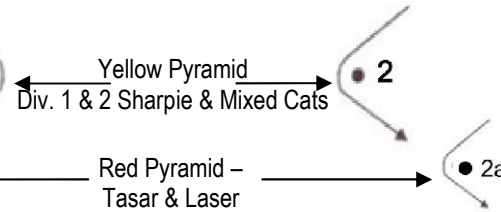


Windward mark Yellow Triangle Two Black Bands
ALL Classes



Yellow Pyramid
Div. 1 & 2 Sharpie & Mixed Cats

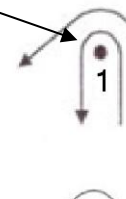
Red Pyramid –
Tasar & Laser



TRIANGLE – PORT COURSE

Course 'B'
Yellow Flag, Black Letter

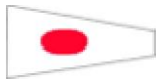
Windward mark Yellow Triangle Two Black Bands
Div. 1 & 2, Sharpies, Mixed Cats



Windward Mark Red Triangle One Yellow Band
Taser, Laser

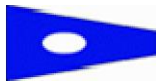


Leeward Mark Yellow Triangle All Classes



for **Course 1**

Start-1-2-3-1-3-1 (leave to Port) - Southern Seas - Finish



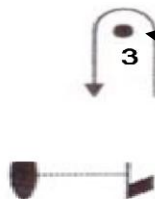
for **Course 2**

Start-1-2-3-1-3-1-2-3-1 (leave to Port) - Southern Seas – Finish

W / L – PORT COURSE

Course A
Yellow Flag, Black Letter

Leeward Mark Yellow Triangle, Div. 1 & 2, Sharpies, Mixed Cats



Leeward Mark Red Triangle
Tasar, Laser

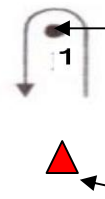


Windward Mark for ALL CLASSES – Yellow Triangle Two Black Bands

W / L – PORT COURSE

Course B
Yellow Flag, Black Letter

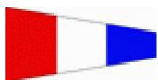
Windward mark Yellow Triangle/Two Black Bands
Div. 1 & 2, Sharpie, Mixed Cats



Windward mark Red Triangle/Yellow Band
Tasar, Laser



Leeward Mark Yellow Triangle All Classes



for **Course 3**

Start-1-3-1-3-1 (leave to Port) - Southern Seas – Finish



for **Course 4**

Start-1-3-1-3-1-3-1 (leave to Port) - Southern Seas – Finish

Clearing marks may be laid if required. Please Note Rule 13.4 When finishing at sea.

10 The Start

- 10.1** Racing will be started using Rule 26. Classes will be started in the order of Division 1 at 1400 hours, Division 2 / J&M at 1405. Sharpies start at 1410, Catamarans at 1415, Tasars / Lasers / Mixed monohulls at 1420 hours. Junior classes start from 1330 hours. ***Div 1, Div 2 and J&M start times for Passage Series will be shown in sailing calendar or otherwise notified.***
- 10.2** The starting line will be between a mast or staff displaying an orange flag on the committee boat at the starboard end and the port end starting mark, which will be an orange cylindrical buoy displaying an orange flag.
- 10.3** A buoy may be streamed from the Start Boat. For the purpose of the application of RRS 31, the buoy is deemed to be a permanent part of the Start Boat and any boat touching the buoy or passing between it and the Start Boat, shall be deemed to have touched the Start Boat.
- 10.4** Boats whose Warning Signal has not been made shall avoid the starting area.
- 10.5** A boat starting later than ten (10) minutes after their Starting Signal will be scored '**Did Not Start**'.
- 10.6** When there is a combined start for all classes, the line will be divided by an inflatable buoy. Div 1 shall start between the middle mark and the outer mark at the Port end. All other classes shall start between the Start Boat at the Starboard end and the middle mark.

11 Recalls

- 11.1** Recalls will be signalled in accordance with racing rules 29.1 and 29.2.
- 11.2** When a general recall has been signalled, the recalled class shall then accept the starting signal for the last scheduled event as its warning signal. If more than one class has a general recall, then they shall start in the sequence set out initially.

12 Change of the Position of the Next Mark

To change the position of the next mark, the Race Committee will put in a new mark and remove the old mark. A red square means the mark has been shifted to PORT. A green triangle means the mark has been shifted to STARBOARD. A negative (−) sign means the course has been shortened. A plus (+) sign means the course has been lengthened. (The change will be signalled before the leading boat has begun the leg, although the new mark may not yet be in the new position. Any mark to be rounded after rounding the moved mark may be relocated without further signalling to maintain the course configuration).

13 The Finish

- 13.1** The finishing line will be an extension of an imaginary line between the control tower and the V marker on the beach after rounding Southern Seas Mark to Starboard. The extremities will be indicated by a red stick mark (IDM) at the inner end and a green stick mark (ODM) at the outer end. Boats shall pass between the IDM and ODM marks when finishing.
- 13.2** No boat shall pass through the finishing line at any time after the starting signal for their class other than to finish the race. Breach of this instruction will cause disqualification without a hearing. (This changes rule 63.1).
- 13.3** A sound signal will be made for the first boat to finish in each class.
- 13.4** When finishing at sea the committee boat will display a "**blue flag**" with the on-station flag at the first warning signal. This flag will be lowered during racing and displayed on finish. Finish line will be existing Start Line.

14 Penalty System

- 14.1 For ALL Classes, rules 44.1 and 44.2 are changed so that two (2) turns is replaced by a one (1) turn including one tack and one jibe.
- 14.2 A boat that has taken a penalty or retired under rule 31 or 44.1 shall complete an acknowledgement form at the race office within the protest time limit.

15 Time Limit

- 15.1 The time limit will be three (3) hours. Boats failing to finish within ninety (90) minutes after the first boat sails the course and finishes will be scored 'Did Not Finish'. (This changes rule 35).
- 15.2 There shall be no time limit for races in the Passage Series.
- 15.3 The decision to shorten, postpone or abandon a race will be at the sole discretion of the Race Officer. (This changes rule 32.1).
- 15.4 After the starting signal, the race committee may shorten the course (display flag S with two sounds) or abandon the race (display flag N, N over H, or N over A, with three sounds),
 - (a) because of foul weather,
 - (b) because of insufficient wind making it unlikely that any boat will finish within the time limit,
 - (c) because a mark is missing or out of position, or
 - (d) for any other reason directly affecting the safety or fairness of the competition.
- 15.5 In addition, the race committee may shorten the course so that other scheduled races can be sailed or abandon the race because of an error in the starting procedure. However, after one boat has sailed the course and finished within the time limit, if any, the race committee shall not abandon the race without considering the consequences for all boats in the race or series.

If the race committee signals a shortened course (displays flag S with two sounds), the finishing line shall be,

 - (A) Finish at Southern Seas/club as per **SI 13**

The shortened course shall be signalled before the first boat crosses the finishing line.

16 Protest and Requests for Redress

- 16.1 Protests forms shall be available at the Race Office. Protests shall be delivered there within two (2) hours of the last boat's finishing time or, where multiple races are held, the finishing time of the last boat of that class in its last race of the day.
- 16.2 Notices will be posted on the official notice board within 30 minutes of the Protest Time Limit to inform competitors of hearings in which they are parties or named as witnesses.

17 Arbitration

- 17.1 An arbitration hearing will be conducted for all protests lodged in accordance with rule 61 which allege an infringement of a rule of Part 2 or 4. Such hearings will be held subsequent to the protest being lodged and prior to the protest hearing.
- 17.2 The time and place of the arbitration hearing will be decided by the arbitrator and such advice may be given verbally. One representative of each boat shall attend the arbitration hearing and no witnesses shall be allowed. The arbitrator shall decide the manner in which testimony is given.
- 17.3 After taking testimony at an arbitration hearing, the arbitrator shall make one of the following conclusions:
 - a) The protest does not comply with rule 61 and the protestor may withdraw the protest.
 - b) The matter shall proceed to a protest hearing.
 - c) No rule was broken and the protestor may withdraw the protest.
 - d) A rule was broken by one or more of the boats involved, the infringing boat(s) may accept scoring points equal to a finishing place mid-way between the boat's actual finishing place

and a disqualification, and if so accepted, the protestor shall withdraw the protest. (Half points shall be disregarded and the points of other boats shall not be adjusted).

17.4 An arbitration hearing shall not be re-opened. No conclusion of an arbitrator shall be subject to appeal or be grounds for redress.

17.5 Should the protest proceed to a protest hearing, then the arbitrator may be a member of the Protest Committee. Any evidence given by an arbitrator during a protest hearing shall be given only in the presence of the parties to the hearing.

18 Scoring

18.1 Races for consistency points will be scored using the Bonus Point scoring system of RRS Appendix A. The final result will exclude the two worst scores. Other series will be scored using the Low Point scoring system of RRS Appendix A, where each yacht shall exclude their worst score, although, if only 4 (four) heats or less are completed, all are to count. In the case of a DNS, DNF or DSQ, the score will be the maximum fleet size plus 1. (ie; 10 boats in the fleet = 11 points).

18.2 Change of Helmsperson – Each yacht shall sail with at least 50% of its normal crew, of which one must helm.

18.3 For boats competing in approved events – Flag officers and members who miss races because of club or class commitments may apply to the sailing committee, in writing, to have average points awarded for the missed races. Such application shall be made within one (1) week of the missed race.

19 Radio Communication

A boat shall neither make radio transmissions while racing nor receive radio communications not available to all boats. This restriction also applies to mobile telephones.

20 Prizes

Prizes for series will be awarded to all classes in proportion to the number of boats starting in each series. The committee will determine which classes are awarded prizes for each series.

21 Disclaimer of Liability

Competitors participate in the Sailing Season entirely at their own risk. See rule 4 'Decision to Race' which states "the responsibility for a boat's decision to participate in a race or to continue racing is hers alone".

22 Insurance

Each participating boat shall be insured with valid third-party liability insurance with a minimum cover of \$10 million per event or the equivalent.

23 Racing Requirements

23.1 a) All off the beach boats, not including cabin boats or fixed keel crafts, shall comply with Yachting Australia "Racing Rules of Sailing", Special Regulations Part 2 'Off the Beach Boats'.

b) All skippers and crewpersons shall wear, while on the water, a Personal Floatation Device (PFD), in good repair, secured about their persons in a manner appropriate to the design of the garment. The PFD must comply with the Yachting Australia "Racing Rules of Sailing", Special Regulations Part 2 'Off the Beach Boats'. Part 2, item 5.01.

23.2 All persons on cabin boats and fixed keel crafts are recommended to wear a PFD. The PFD shall comply with Special Regulations, item 5.01 PFD's shall be worn when "flag Y" is displayed with one sound before or with the warning signal. RRS40.

- 23.3** All cabin boats and fixed keel crafts shall comply with Yachting Australia "Racing Rules of Sailing" Special Regulations Part 1 'For Racing Boats', to a minimum of Category 6 safety requirements.
- 23.4** All boats competing in the passage series (Meelup race and Dunsborough race) shall carry a motor and enough fuel enabling them to return to the club or Port Geographe Marina unaided and they shall carry a 27MHz or VHF radio. Life jackets/PFD's must be worn.
- 23.5** In mixed fleet racing, Rule 49.1 does not apply to classes sailing in accordance with their class rules.

24 Handicap and Yardstick Calculations

Handicap and Yardsticks will be calculated and adjusted as required by the Sailing Committee and the Club Handicapper. If any yacht wishes a revision of handicaps or yardsticks, they must apply in writing or email to the Sailing Committee with supporting evidence of their claim.