



GBYC SAILING INSTRUCTIONS ^{v5}

2023/2024 Season

The 2023/24 sailing season will commence on Saturday 23rd September 2023 and carry through to Saturday 6th April 2024. The sailing will be conducted by Geographe Bay Yacht Club Inc. on the waters of Geographe Bay.

1 Rules

The races will be governed by the “rules” as defined in the Australian Sailing Racing Rules of Sailing (RRS) 2021-2024, Australian Sailing Special Regulations Part 1 for Racing Boats and these sailing instructions of Geographe Bay Yacht Club Inc.

2 Entries

- 2.1 All skippers are required to complete the nomination form and pay the race nomination fee, prior to participating in any race, at least 30 minutes before the first warning signal. This can be done by credit card, direct debit, and cash or by indicating your intention of payment on the nomination form.
- 2.2 Nomination forms will be available outside the committee room or **nominate online** at www.gbyc.com.au. **Any skipper failing to nominate or pay race nomination fee, shall be deemed a non-starter.**
- 2.3 Race nomination fees (Club Race Fee) – Refer [Club Race Nominations \(gbyc.com.au\)](http://www.gbyc.com.au) on the GBYC Website.
- 2.4 New Members are required to pay their membership by the fourth race of the Official Sailing Calendar season.
- 2.5 All competitors shall carry Australian Sailing Membership either by GBYC membership or SailPass. **Please Note Rule 46 Person In Charge & 75 – Entering An Event**

3 Notice to Competitors

- 3.1 Notices to competitors will be posted on the official notice board located outside the committee Office or via email.
- 3.2 Division 1 & 2 & Shorthanded will receive a broadcast on VHF CH 73 ninety (90) minutes before and sixty (60) minutes before the first warning signal.
- 3.3 Division 1 & 2 boats may also be notified by text message from the Class Captain.

4 Changes to Sailing Instructions

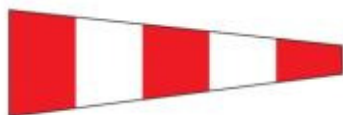
- 4.1 Any change to the Sailing Instructions will be posted no less than one (1) hour before the first race it will affect.
- 4.2 Any change to the Schedule of Races nominated in the Sailing Calendar will be communicated via email and/or posted on GBYC Notice Board by 1800 hours on the day before it will take effect.

5 Race Signals

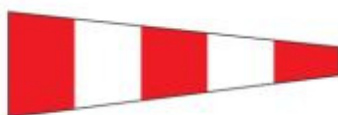
RACE SIGNALS

The meanings of visual and sound signals are stated below. An arrow pointing up or down (↑ ↓) means that a visual signal is displayed or removed. A dot (•) means a sound; five short dashes (— — — — —) mean repetitive sounds; a long dash (—) means a long sound. When a visual signal is displayed over a class flag, fleet flag, event flag or race area flag, the signal applies only to that class, fleet, event or race area.

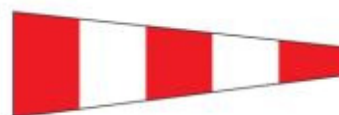
Postponement Signals



AP Races not started are *postponed*. The warning signal will be made 1 minute after removal unless at that time the race is *postponed* again or *abandoned*.



AP over H Races not started are *postponed*. Further signals ashore.



AP over A Races not started are *postponed*. No more racing today.

AP over a Numeral Pennant

Postponement of 1-9 hours from the scheduled starting time.



Pennant 1 ↑•• ↓•



Pennant 2 ↑•• ↓•



Pennant 3 ↑•• ↓•



Pennant 4 ↑•• ↓•



Pennant 5 ↑•• ↓•



Pennant 6 ↑•• ↓•



Pennant 7 ↑•• ↓•



Pennant 8 ↑•• ↓•



Pennant 9 ↑•• ↓•

Abandonment Signals



N All races that have started are *abandoned*. Return to the starting area. The warning signal will be made 1 minute after removal unless at that time the race is *abandoned* again or *postponed*.



N over H
All races are *abandoned*. Further signals ashore.



N over A All races are *abandoned*. No more racing today.

Safety

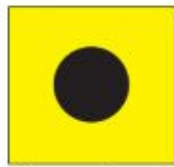


V Monitor communication channel for safety instructions (see rule 37).

Preparatory Signals



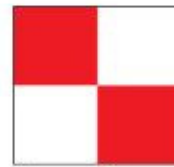
↑ ● ↓ —
P Preparatory signal.



↑ ● ↓ —
I Rule 30.1 is in effect.



↑ ● ↓ —
Z Rule 30.2 is in effect.



↑ ● ↓ —
U Rule 30.3 is in effect.



↑ ● ↓ —
Black flag. Rule 30.4 is in effect.

Recall Signals

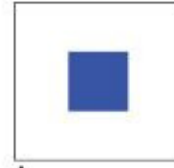


↑ ●
X Individual recall.



↑ ● ● ↓ ●
First Substitute General recall. The warning signal will be made 1 minute after removal.

Shortened Course



↑ ● ●
S The course has been shortened. Rule 32.2 is in effect.

Changing the Next Leg



— — — —
C The position of the next *mark* has been changed:



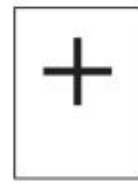
to starboard;



to port;



to decrease the length of the leg;



to increase the length of the leg.

Other Signals



↑ ●
L Ashore: A notice to competitors has been posted.
Afloat: Come within hail or follow this vessel.



— — — —
M The object displaying this signal replaces a missing *mark*.



↑ ●
Y Wear a personal flotation device (see rule 40).



(no sound)
Orange flag. The staff displaying this flag is one end of the starting line.



(no sound)
Blue flag. The staff displaying this flag is one end of the finishing line.

6 Signals Made Ashore

- 5.1 Signals made ashore shall be displayed on flag poles adjacent to the main boat ramp.
- 5.2 When AP flag is displayed ashore, '1 minute' is replaced with 'not less than 30 minutes' in Race Signal AP.

7 Schedule of Races






- 6.1 Races are scheduled as per the Sailing Calendar.
- 6.2 When more than one race will be held on the same day, the Warning Signal for each succeeding race will be made as soon as practicable.

8 Class Flags

The class flag(s) will be as follows:

Division 1		Red over yellow over red (Naval numeral flag 1)
Division 2		Yellow over red over yellow (Naval numeral flag 2)
Shorthanded Division		Blue over red over blue (Naval numeral flag 3)

Divisions 1 & 2 & Shorthanded shall fly their class flag on the backstay or shrouds whilst racing.

Sharpies		Yellow kangaroo insignia on green background
Mixed Cats		Black M on yellow background
Lasers		Red Laser insignia on white background
Tasars		Red Tasar insignia on white background
Pelicans		Black pelican on white background

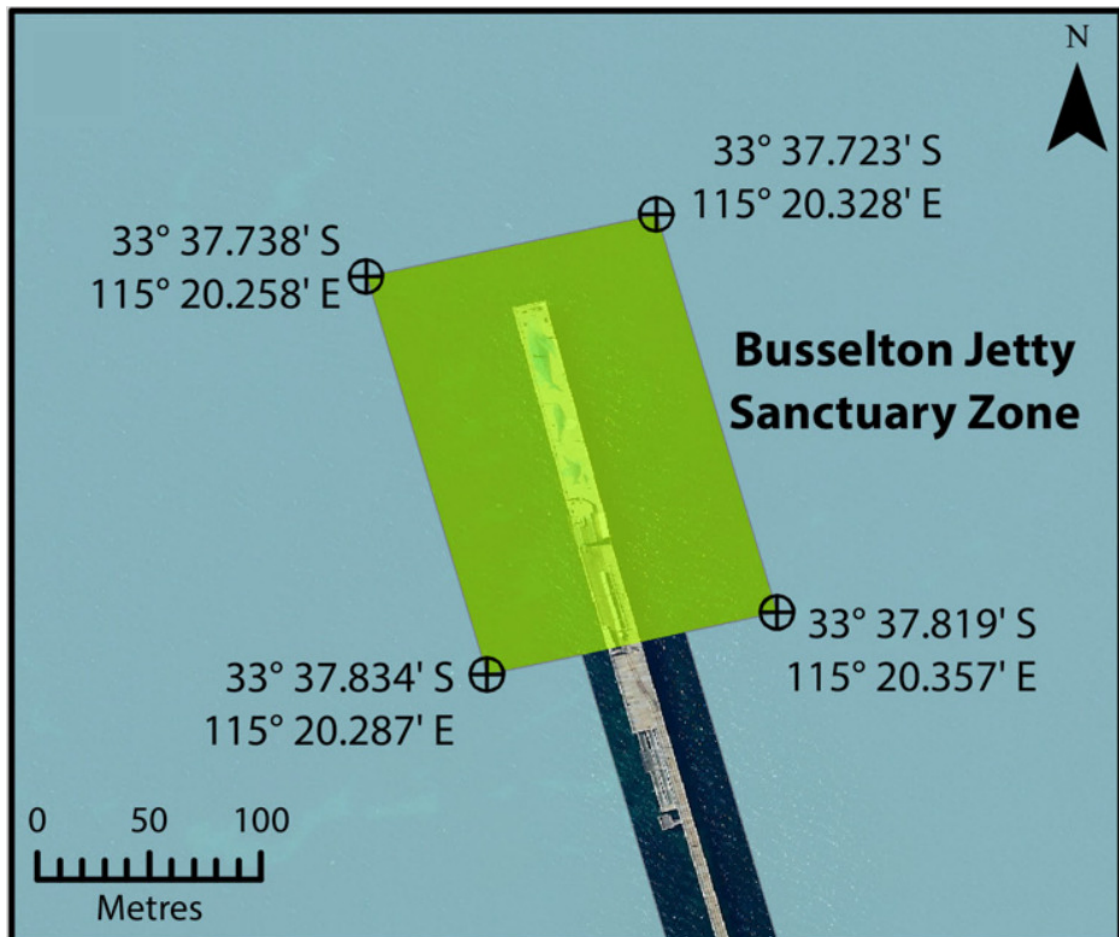
9 Courses

- 9.1** All courses shall be sailed as per the course diagrams shown in Section 10. Passage series refer to passage course sheets.
- 9.2** When there is a gate, boats shall sail between the gate marks from the direction of the previous mark and round either gate mark.
- 9.3** All boats (except for Shorthanded Division) shall proceed from the final mark shown on the course diagram to the Southern Seas Buoy, which is a Stick buoy with yellow & blue bands, approximately 300 metres east of the finishing line. This mark is to be rounded to starboard before proceeding to the finish line.
- 9.4** Shorthanded Division - Passage race courses will be chosen by the Shorthanded fleet and communicated within the fleet by VHF on Channel 73. Finish line will be between a virtual buoy and the northern tip of the Busselton Jetty. Courses will be as per passage series courses with all boats proceeding to the finish line after the last mark is rounded without rounding Southern Seas mark.
Virtual Finish Buoy coordinates. 33 degrees 37.687S 115deg 20.298 E
- 9.5** The course to be sailed will be signalled by a numeral pennant displayed on the Start Boat no later than the warning signal for the first class.
- Series** (*Divisions 1 & 2 & Shorthanded only*)
- Passage Series as per course sheets
 - Geographe Series Div 1/2/Shorthanded Windward/Leeward
- Series** (*OTB Classes*)
- Championships Triangle or Windward/Leeward
 - Geographe Series Triangle or Windward/Leeward
 - Short course Series Windward/Leeward
- 9.6** A windward clearance mark (1a) shall be laid for all courses unless otherwise notified.
- If the course direction allows a boat to finish the course by sailing directly from Mark 3 to Southern Seas while remaining on the starboard side of Mark 1 & 1a, they may do so.
- 9.7** All courses for the 2023/24 season shall be:
- OTB Triangle - Course 1 or 2 or 3
 - OTB Windward/Leeward - Course 4 or 5 or 6
 - Div 1 Passage races – Long Courses (Refer Section 10.2 & 10.3)
 - Div 2 Passage races – Short Courses (Refer Section 10.2 & 10.3)
 - Shorthanded Passage races - Long Courses (Refer Section 10.2 & 10.3)
 - Div 1, 2 & Shorthanded - Meelup Return & Dunsborough Overnight Races (Refer Section 10.4)
- 9.8** Courses shall be sailed as scheduled in the Sailing Calendar and courses outlined in Section 10. Race start times and courses may be altered, but only in consultation with and approved by the Sailing Committee and the Race Officer.

9.9 Course Exclusion Zones & Obstructions

The following exclusion zones are a "Continuing Obstruction" and therefore Rule 19 & 20 apply:

- A 50m exclusion zone shall be maintained by all sailing boats on all sides of the Busselton Jetty
- The Busselton Jetty Sanctuary Zone marked by buoys place by Govt Dept Parks and Wildlife (PAW) as shown in the diagram below. All sail boats shall keep clear and remain on the seaward side of this area + any swimming or diving activities within it's vicinity.

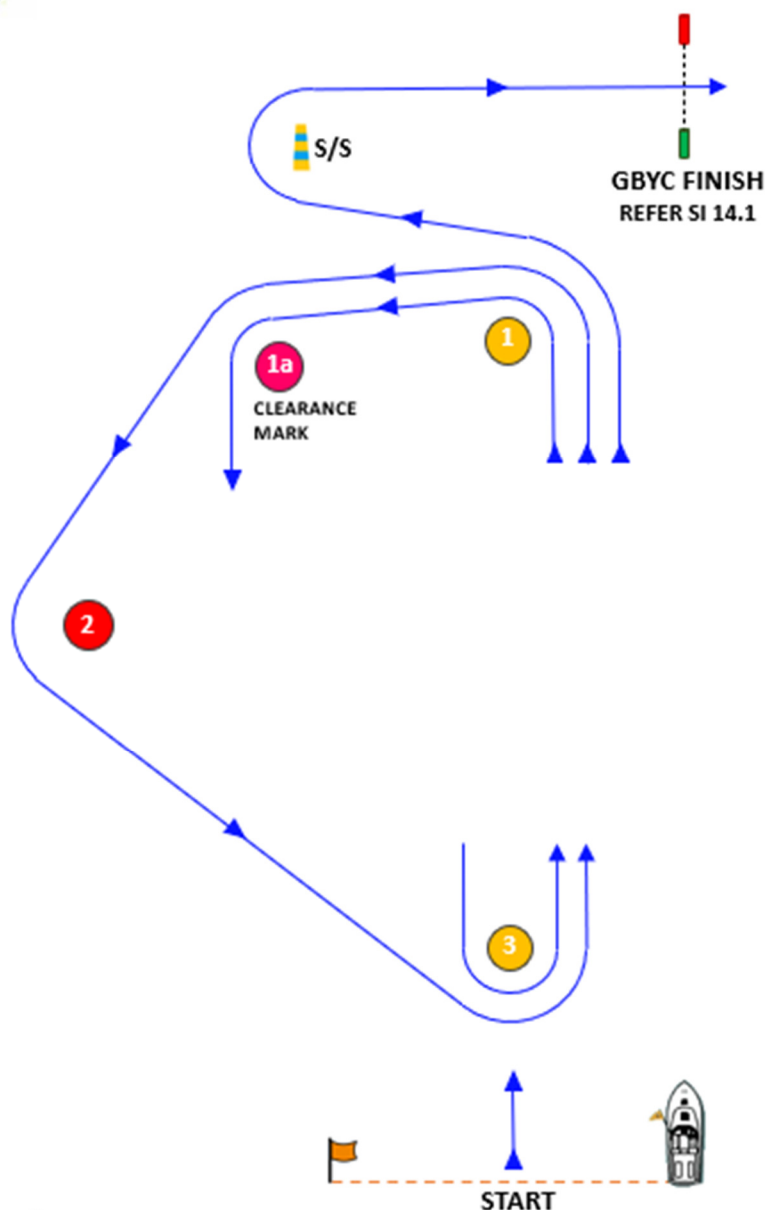


10 Course Diagrams

10.1 OTB Courses



GBYC COURSE 1, 2 & 3



Course Instructions

1. This diagram shall be read in conjunction with the GBYC Sailing Instructions
2. Course lengths to be determined by PRO
3. Start Boat and Start Line may be either Windward or Leeward of Mark 3 as per PRO discretion
4. Mark S/S (Southern Seas) & GBYC Finish are fixed, therefore may be in a different location relative to course and wind direction shown in diagram.
5. Course Number shall be shown by relevant flag on Start Boat



Course 1	Start	1	2	3	1	3	1	S/S	F
----------	-------	---	---	---	---	---	---	-----	---



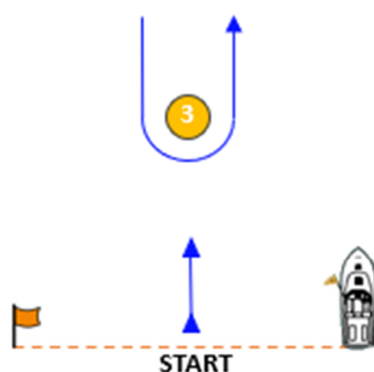
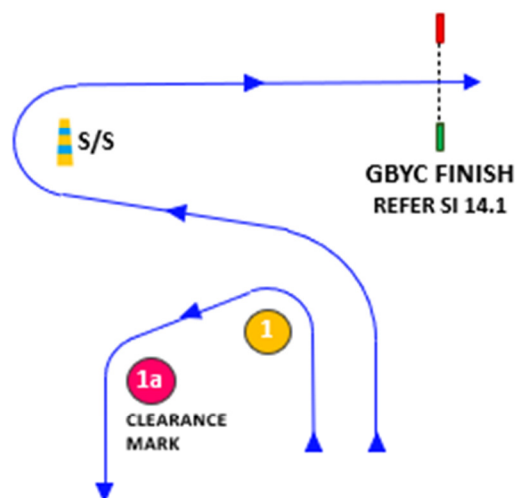
Course 2	Start	1	2	3	1	3	1	2	3	1	S/S	F
----------	-------	---	---	---	---	---	---	---	---	---	-----	---



Course 3	Start	1	2	3	1	3	1	2	3	1	3	1	S/S	F
----------	-------	---	---	---	---	---	---	---	---	---	---	---	-----	---



GBYC COURSE 4, 5 & 6



Course Instructions

1. This diagram shall be read in conjunction with the GBYC Sailing Instructions
2. Course lengths to be determined by PRO
3. Start Boat and Start Line may be either Windward or Leeward of Mark 3 as per PRO discretion
4. Mark S/S (Southern Seas) & GBYC Finish are fixed, therefore may be in a different location relative to course and wind direction shown in diagram.
5. Course Number shall be shown by relevant flag on Start Boat



Course 4	Start	1	3	1	3	1	S/S	F
----------	-------	---	---	---	---	---	-----	---

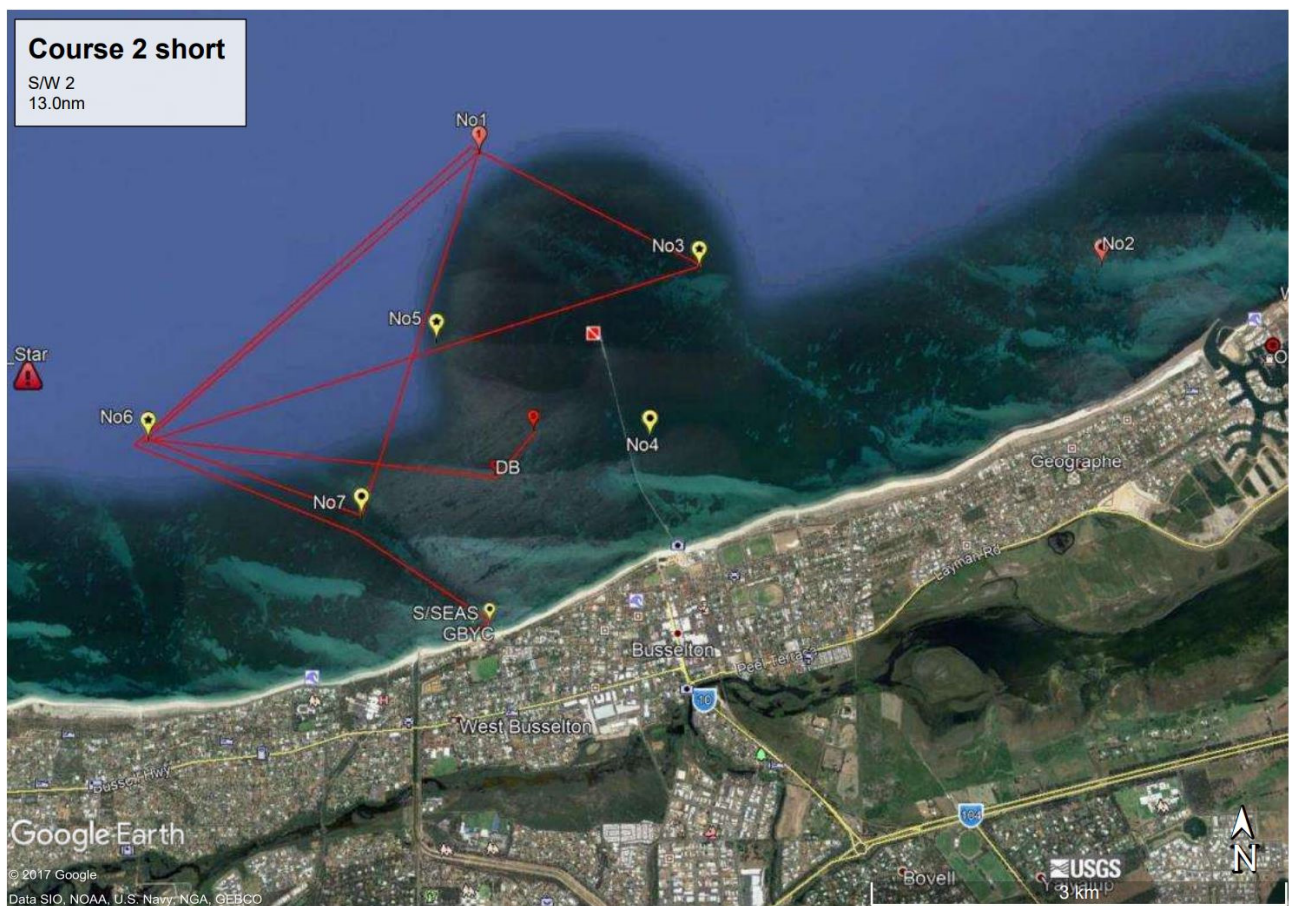
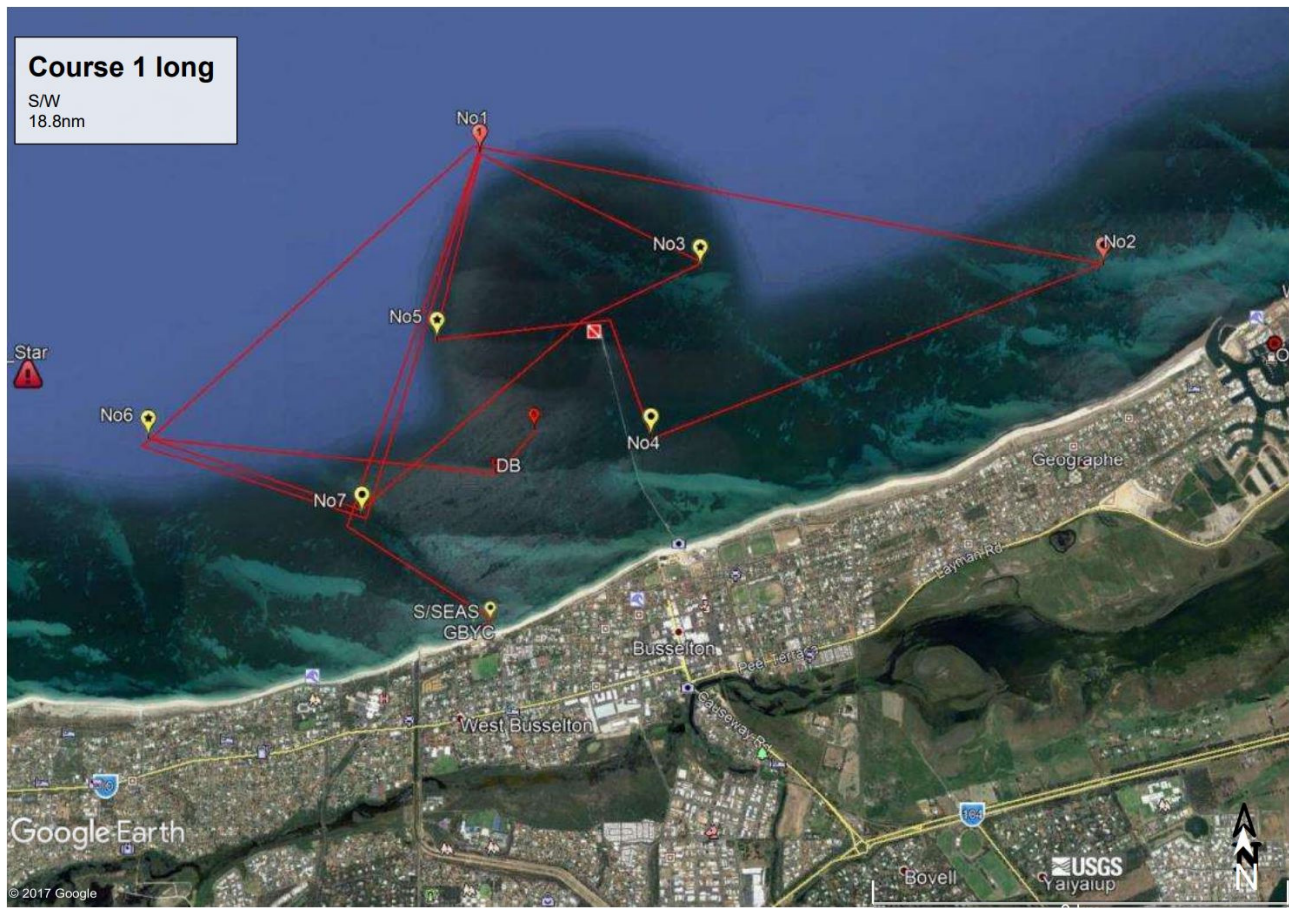


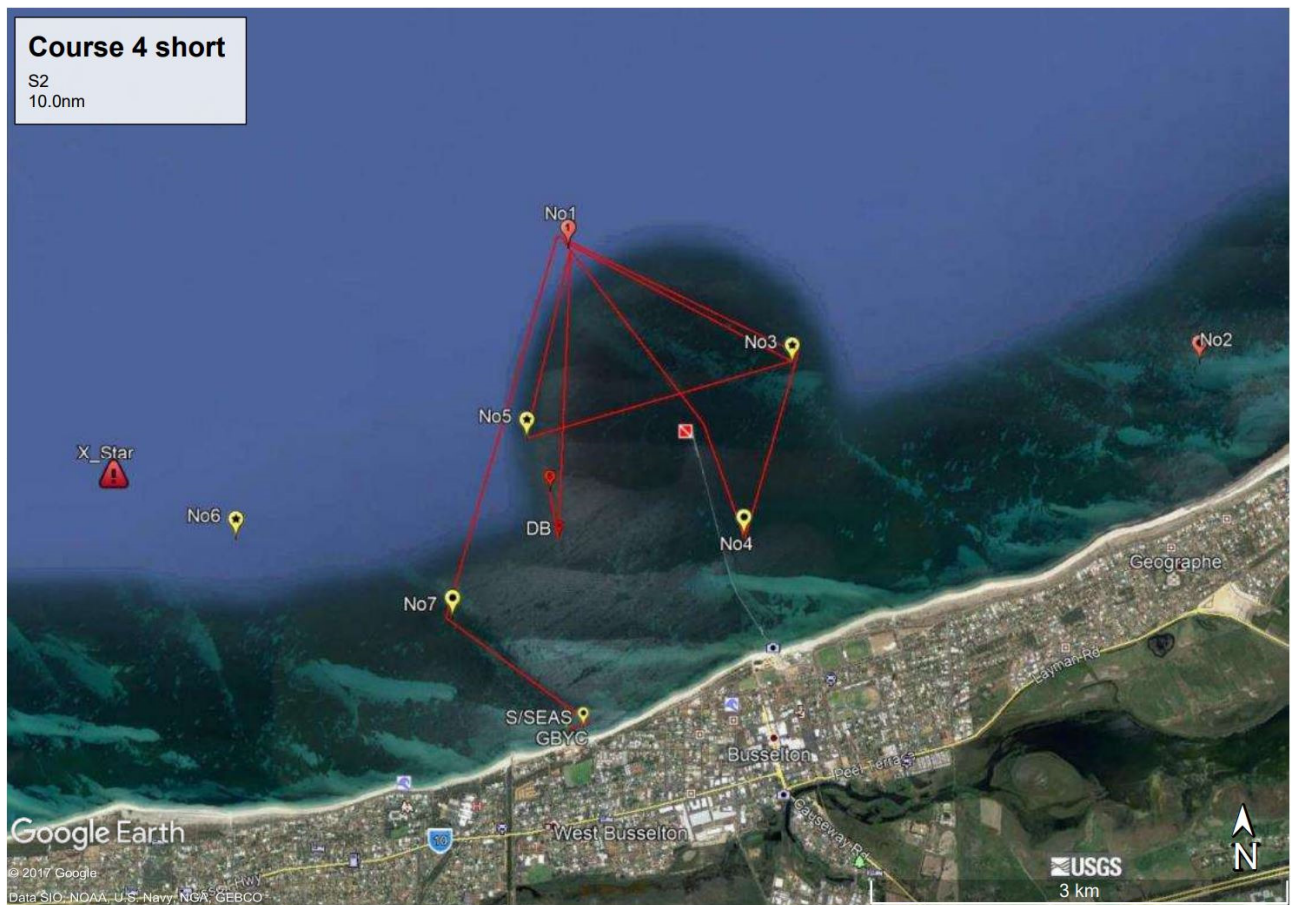
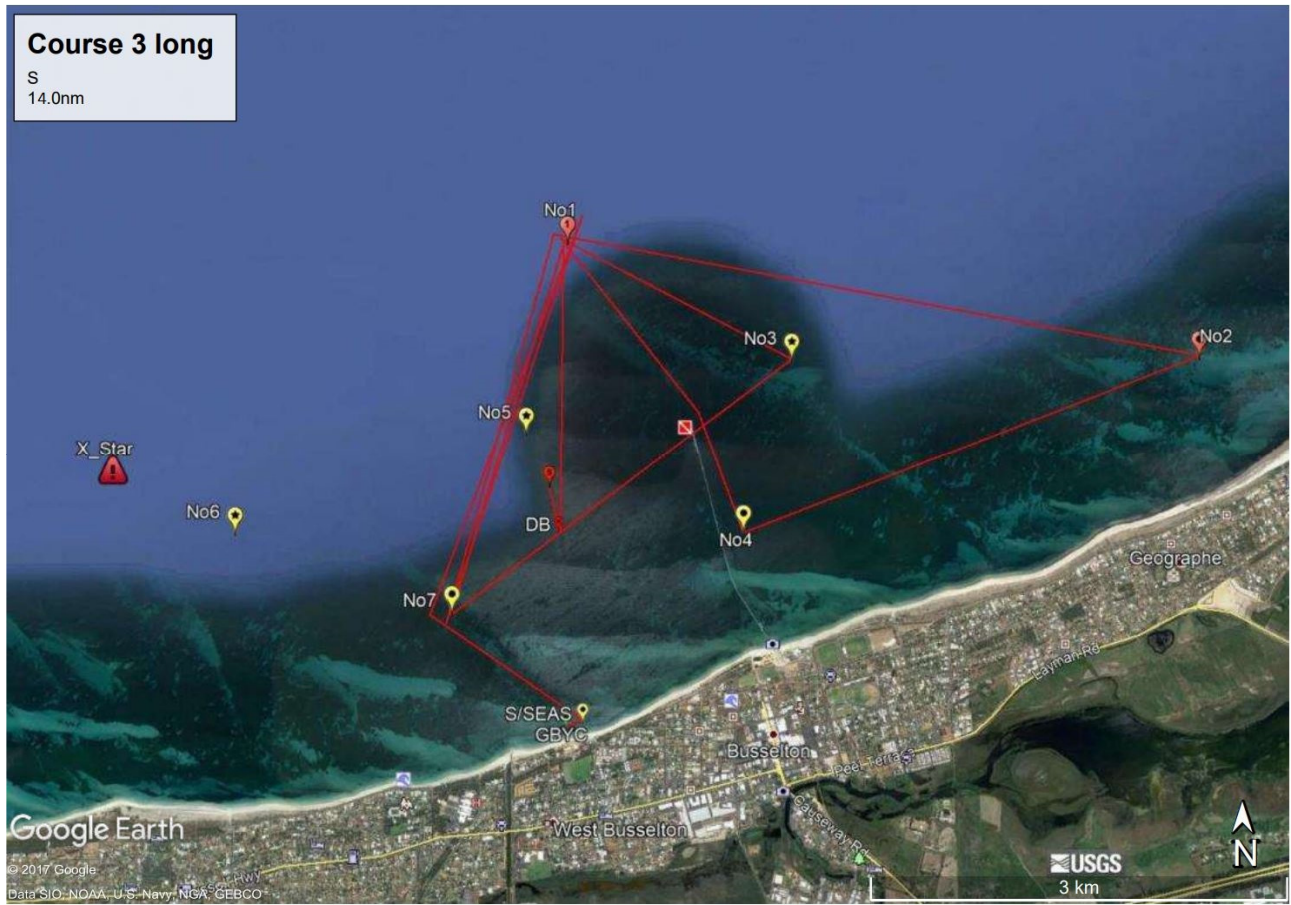
Course 5	Start	1	3	1	3	1	3	1	S/S	F
----------	-------	---	---	---	---	---	---	---	-----	---

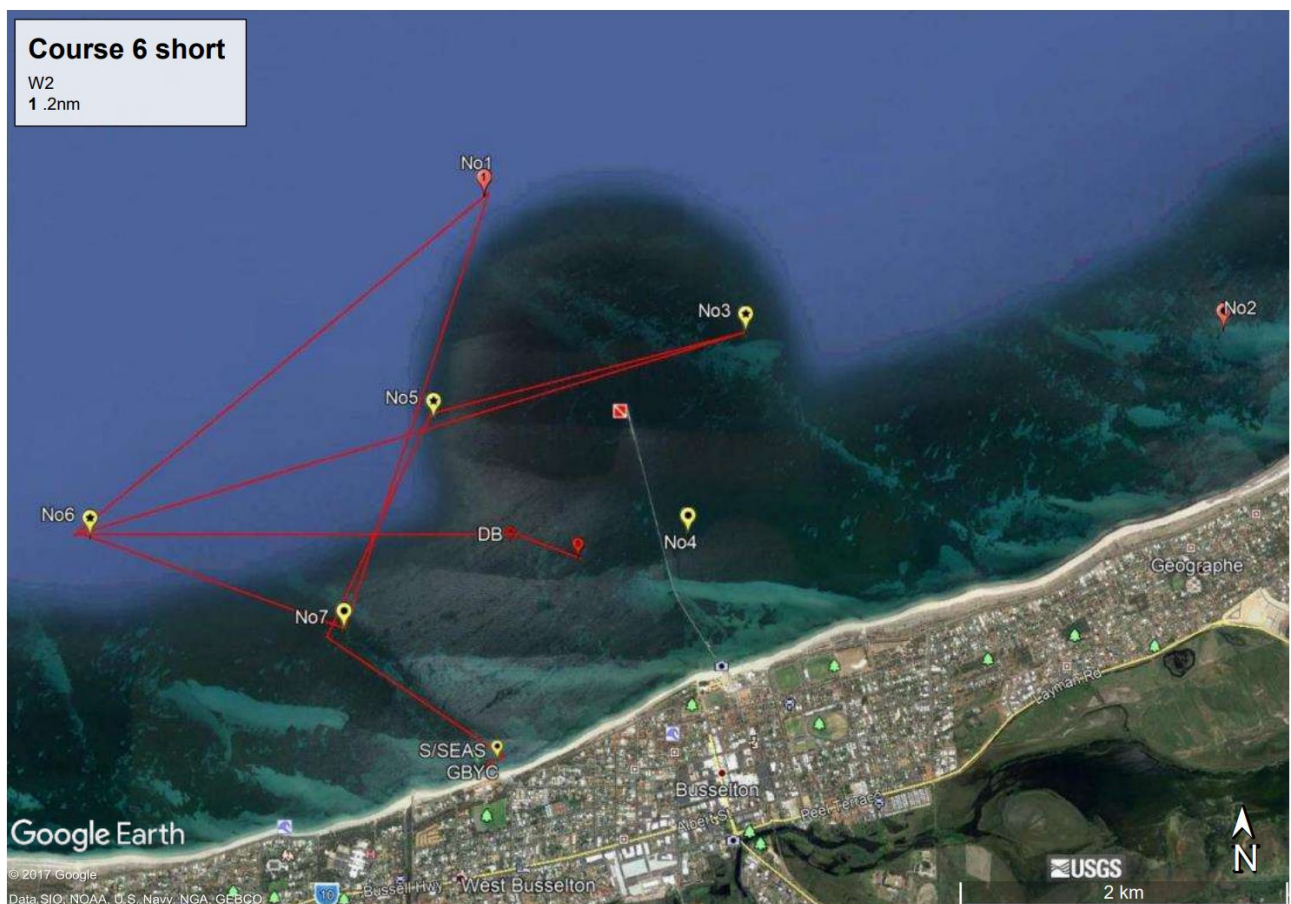
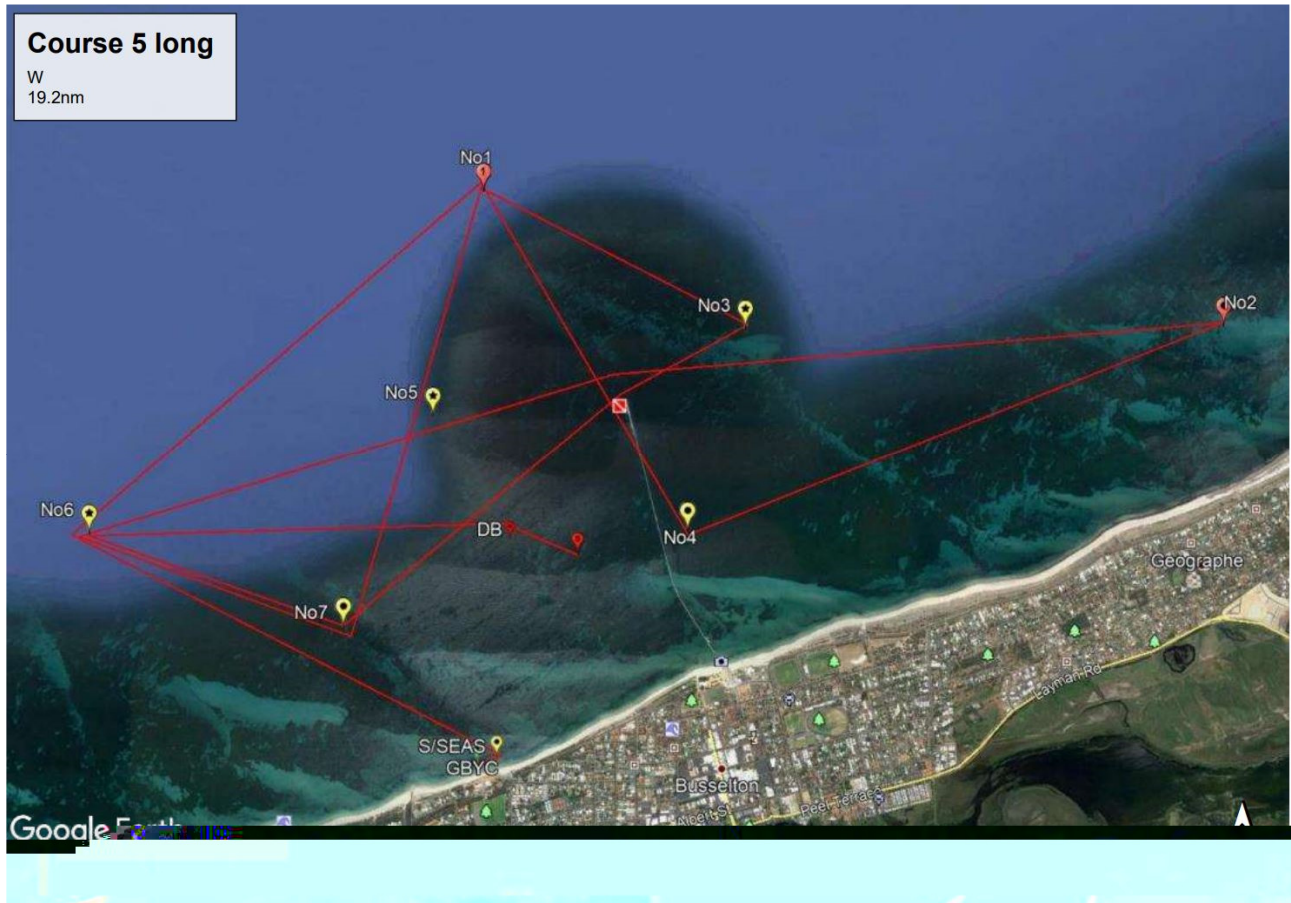


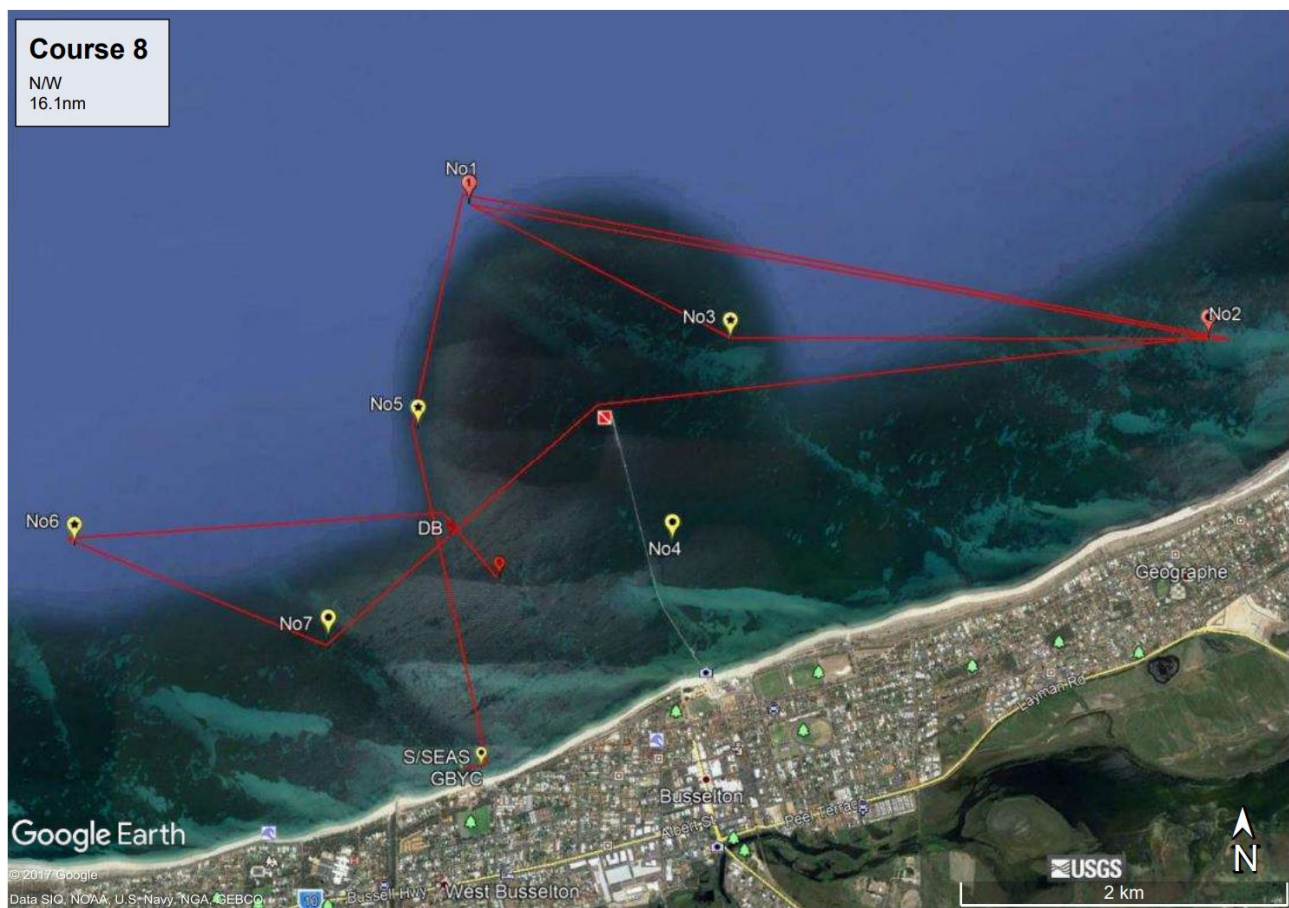
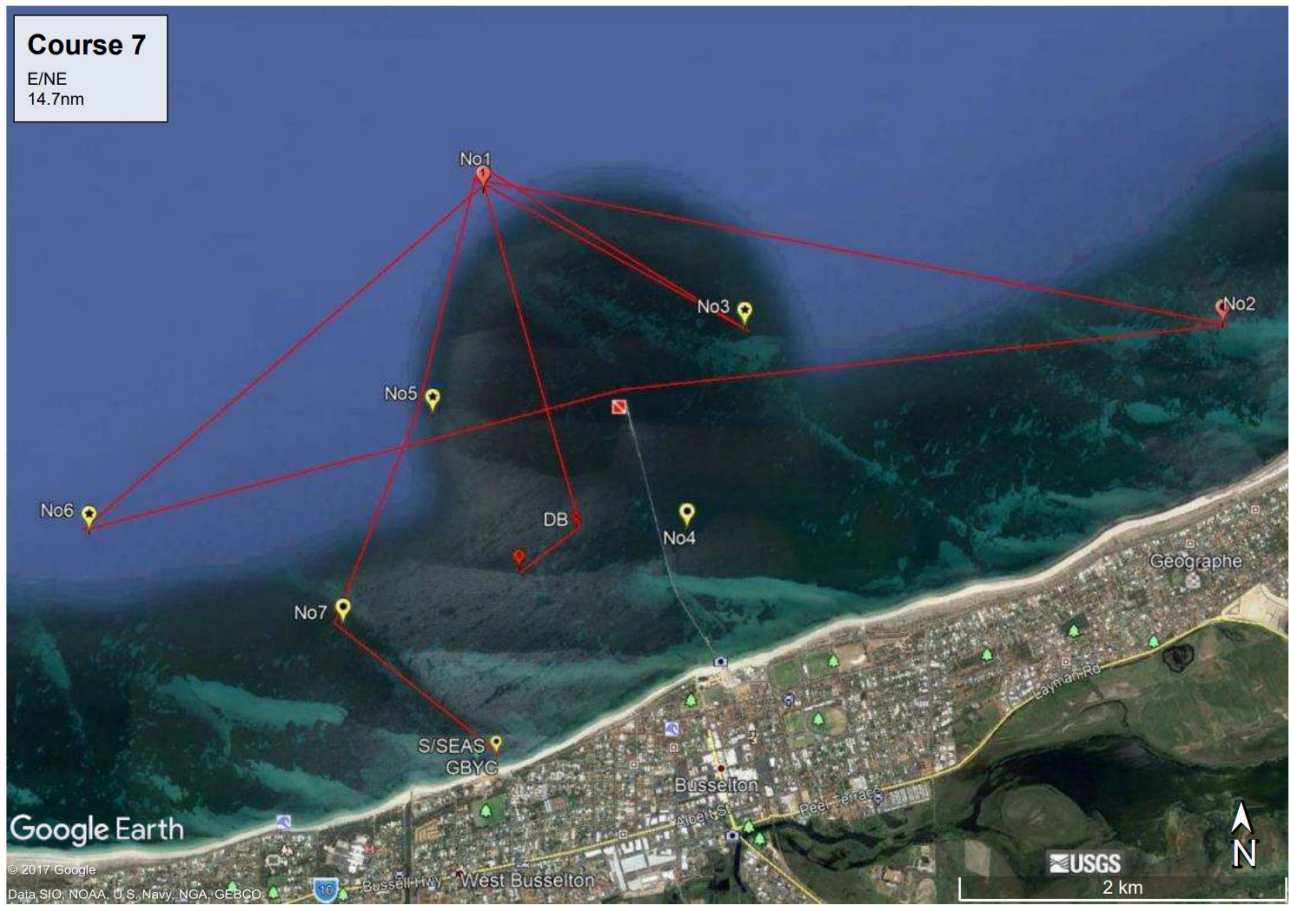
Course 6	Start	1	3	1	3	1	3	1	3	1	S/S	F
----------	-------	---	---	---	---	---	---	---	---	---	-----	---

10.2 Passage Race Courses (to be read in conjunction with Section 10.3 Course Instructions)


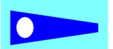
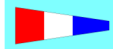

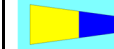











10.3 Passage Series Course Instructions (to be read in conjunction with Section 10.2 Course Diagrams)

COURSE 1 		COURSE 2 		COURSE 3 		COURSE 4 		COURSE 5 		COURSE 6 		COURSE 7 		COURSE 8 	
S/W		S/W2		S		S2		W		W2		E/NE		N/W	
LONG		SHORT		LONG		SHORT		LONG		SHORT					
START		START		START		START		START		START		START		START	
DAY BUOY		DAY BUOY		DAY BUOY		DAY BUOY		DAY BUOY		DAY BUOY		DAY BUOY		DAY BUOY	
MARK 6	PORT	MARK 6	PORT	MARK 1	PORT	MARK 1	PORT	MARK 5	PORT	MARK 6	PORT	MARK 1	PORT	MARK 6	PORT
MARK 7	PORT	MARK 7	PORT	MARK 7	PORT	MARK 5	PORT	MARK 6	PORT	MARK 7	PORT	MARK 6	PORT	MARK 7	PORT
MARK 3	PORT	MARK 1	PORT	MARK 3	PORT	MARK 3	PORT	MARK 7	PORT	MARK 1	PORT	MARK 2	PORT	MARK 2	PORT
MARK 1	PORT	MARK 6	PORT	MARK 1	PORT	MARK 1	PORT	MARK 3	PORT	MARK 6	PORT	MARK 1	PORT	MARK 1	PORT
MARK 5	PORT	MARK 3★	PORT	MARK 4	PORT	MARK 4	PORT	MARK 1	PORT	MARK 3★	PORT	MARK 3★	PORT	MARK 3★	PORT
MARK 4	PORT	MARK 1	PORT	MARK 2	PORT	MARK 3★	PORT	MARK 4	PORT	MARK 5	PORT	MARK 1	PORT	MARK 2	PORT
MARK 2	PORT	MARK 6	PORT	MARK 1★	PORT	MARK 1	PORT	MARK 2	PORT	MARK 7	PORT	MARK 7	PORT	MARK 1	PORT
MARK 1★	PORT	S. SEAS	STB	MARK 7	PORT	MARK 7	PORT	MARK 6★	PORT	S. SEAS	STB	S. SEAS	STB	MARK 5	PORT
MARK 6	PORT	FINISH		MARK 1	PORT	S. SEAS	STB	MARK 7	PORT	FINISH		FINISH		S. SEAS	STB
MARK 7	PORT			MARK 7	PORT	FINISH		MARK 1	PORT					FINISH	
MARK 1	PORT			S. SEAS	STB			MARK 6	PORT						
MARK 7	PORT			FINISH				S. SEAS	STB						
S. SEAS	STB							FINISH							
FINISH															
18.8 NM		13.0 NM		14.0 NM		10.0 NM		19.2 NM		10.2 NM		14.7 NM		16.1 NM	

★ **Division 2** – Last mark to Round. Then Finish at Club finish line (See Section 14.1) after rounding Southern Seas as per Course Instructions.

10.3.1 “All-In Start” Passage Series races (nominated in the Sailing Calendar)

- The course to be sailed shall be indicated on the Start Boat using international Numeral Pennants (INP).
- The rounding of the Day Buoy (Yellow Pyramid) will be indicated on the Start Boat by Red Flag for Port or a green flag for Starboard.
- The Start will be to the West of the Busselton Jetty unless otherwise communicated by the RO and GBYC Start Tower.

10.3.2 “Staggered Start” Passage Series Races (nominated in the Sailing Calendar)

- The Course to be sailed by all by all Div 1 & 2 boats + their individual start times shall be posted on the GBYC website - [Progressive Handicaps and Div 1 & 2 Staggered Start Times](#) by 10pm Thursday night.
- The Start will be a virtual GPS location 33°37.687’S, 115°20.298’E (Approx 100m north from end of Busselton Jetty)
- Day Buoy will be omitted from course – Boats may sail from Start GPS location to the next mark listed on Course Instruction.

Passage Series Mark Information - All positions are approximate. Any error in position shown will not be accepted as grounds for protest.

Marks	Lat	Long	Depth	Comments
West of the Jetty				West of the Jetty end. Conditions will Determine the exact Start Area
Mark 1	33°36.5’S	115°19.5’E	8m	Red Spar buoy
MARK 2	33°37.5’S	115°22.8’E	3m	Red special purpose buoy, western Channel Marker PortGeographe
Mark 3	33°37.5’S	115°20.8’E	6m	Yellow special purpose buoy. Spar shape
MARK 4	33°38.3’S	115°20.7’E	3m	Yellow fixed mark
MARK 5	33°37.8’S	115°19.5’E	7m	Yellow special purpose buoy. Spar shape
Mark 6	33°38.2’S	115°18.1’E	5m	Yellow special purpose buoy. Spar shape
Mark 7	33°38.8’S	115°19.5’E	3m	Yellow Stick Mark with Red Bands- Junior N/W mark
Virtual Finish	33°37.687’S	115°20.298’E		Virtual
Dunsborough TURNING	33°37.27’S	115°08.43’E	3m	Inflatable
Meelup Marker	33°34.350’S	115°05.591’E	4m	Yellow Special purpose Buoy. Spar Shape
Southern Seas	West St Carpark			Yellow and Blue Bands, Stick Buoy.

10.4 Meelup Race & Dunsborough Overnight Race Course Instructions

Meelup Race Div 1	Meelup Race Div 2	Meelup Race Shorthanded	DUNSBOROUGH OVERNIGHT DIV 1 & Shorthanded	DUNSBOROUGH OVERNIGHT Division 2
START - CLUB START	Start	Start	START - CLUB START	START - CLUB START
DAY BUOY	DAY BOUY	DAY BOUY	DAY BUOY	DAY BUOY
MARK 5 PORT	MARK 5 PORT	Mark 6	MARK 6 PORT	
			MARK 7 PORT	
			MARK 3 PORT	
DBYC Turning STARBOARD	DBYC FINISH between Dunsborough Turning Mark and a Point due south on the shore)	DBYC Turning Mark STARBOARD	FINISH DBYC	FINISH DBYC
Meelup Marker STARBOARD		Meelup Marker STARBOARD		
Mark 5 STARBOARD		DBYC Finish		
Mark 7 Port				
GBYC S/S & Finish		(Finish between Dunsborough Turning Mark and a Point due south on the shore)		

11 The Start

- 11.1 All Div 1, Div 2 races with an "All-In Start" (as stated on the Sailing Calendar) will be started using Rule 26, 5 minute starting sequence unless notified otherwise.
- 11.2 Classes will be started in the order of Division 1, Division 2, Shorthanded, Sharpies, Mixed Catamarans, Tasars, Lasers, Junior classes. *All start times will be shown in sailing calendar or otherwise notified.*
- 11.3 Races which combine all classes with an "All-In Start" shall be started with a 3 minute Starting sequence as per 11.4 below and use the Div 1 Class flag.
- 11.4 All OTB Class races shall have a 3 minute starting sequence (unless notified otherwise) as per the following:

<i>Minutes before starting signal</i>	Visual Signal	Sound Signal	Means
3	Class Flag	One	Warning Signal
2	P, I, Z, Z with I, U, or black flag	One	Preparatory Signal
1	Preparatory flag removed	One long	One Minute
0	Class flag removed	One	Start Signal

- 11.5 The starting line will be between a mast or staff displaying an orange flag on the committee boat at the starboard end and the port end starting mark, which will be an orange cylindrical buoy displaying a Blue flag.
- 11.6 A buoy may be streamed from the Start Boat. For the purpose of the application of RRS 31, the buoy is deemed to be a permanent part of the Start Boat and any boat touching the buoy or passing between it and the Start Boat, shall be deemed to have touched the Start Boat.
- 11.7 Boats whose Warning Signal has not been made shall avoid the starting area.
- 11.8 A boat starting later than ten (10) minutes after their Starting Signal will be scored '**Did Not Start**'.
- 11.9 When there is a combined start for all classes, the start line will be divided by an inflatable buoy. Div 1, Div 2 & Shorthanded shall start between the middle inflatable bouy and the outer mark at the Port end. All other classes shall start between the Start Boat (at the Starboard end) and the middle inflatable bouy.

12 Recalls

- 12.1 Recalls will be signalled in accordance with racing rules 29.1 and 29.2.
- 12.2 Short Course Series recalls - A boat that is racing in a Short Course Race (which has a 3 minute starting sequence) and has been given an individual recall signal (as per 12.1), must return her entire hull/s completely on the prestart of the starting line no later than 2 minutes after the starting signal or one minute before any later starting signal, whichever is earlier.
- 12.3 When a general recall has been signalled, the recalled class shall then accept the starting signal for the last scheduled event as its warning signal. If more than one class has a general recall, then they shall start in the sequence set out initially.

13 Change of the Position of the Next Mark

To change the position of the next mark, the Race Committee will put in a new mark and remove the old mark. A red square means the mark has been shifted to PORT. A green triangle means the mark has been shifted to STARBOARD. A negative (−) sign means the course has been shortened. A plus (+) sign means the course has been lengthened. (The change will be signalled before the leading boat has begun the leg, although the new mark may not yet be in the new position. Any mark to be rounded after rounding the moved mark may be relocated without further signalling to maintain the course configuration).

14 The Finish

- 14.1 The finishing line will be an extension of an imaginary line between the control tower and the V marker on the beach. The extremities will be indicated by a red stick mark (IDM) at the inner end and a green stick mark (ODM) at the outer end. Boats shall pass between the IDM and ODM marks when finishing.
- 14.2 No boat shall pass through the finishing line at any time after the starting signal for their class other than to finish the race. Breach of this instruction will cause disqualification without a hearing. (This changes rule 63.1). The boat will be exonerated if she returns through finish line the way she came in order to create a direct passage to the next mark. (string line method).
- 14.3 A sound signal will be made for the first boat to finish in each class.
- 14.4 A boat has crossed the finish line when her hull has crossed. No bow sprits or extendable poles are considered part of the hull.
- 14.4 When finishing at sea the committee boat will display a “blue flag” with the on-station flag at the first warning signal. This flag will be lowered during racing and displayed on finish. Finish line will be existing Start Line.
- 14.5 **Shorthanded Division**
 - Finish line will be between a virtual buoy and the northern tip of the Busselton Jetty.
 - Courses will be as per passage series courses with all boats proceeding to the finish line after the last mark is rounded **without** rounding Southern Seas mark.
 - **Virtual Finish Buoy coordinates. 33 degrees 37.687S 115deg 20.298 E**

15 Penalty System

- 15.1 For ALL Classes, rules 44.1 and 44.2 are changed so that two (2) turns is replaced by a one (1) turn including one tack and one gybe.
- 15.2 A boat that has taken a penalty or retired under rule 31 or 44.1 shall complete an acknowledgement form at the race office within the protest time limit.

16 Time Limit

- 16.1 The time limit will be three (3) hours. Boats failing to finish within ninety (90) minutes after the first boat sails the course and finishes will be scored ‘Did Not Finish’.
(This changes rule 35).
- 16.2 There shall be no time limit for races in the Passage Series.
- 16.3 The decision to shorten, postpone or abandon a race will be at the sole discretion of the Race Officer. (This changes rule 32.1).
- 16.4 After the starting signal, the race committee may shorten the course (display flag S with two sounds) or abandon the race (display flag N, N over H, or N over A, with three sounds),
 - (a) because of foul weather,
 - (b) because of insufficient wind making it unlikely that any boat will finish within the time limit,
 - (c) because a mark is missing or out of position, or
 - (d) for any other reason directly affecting the safety or fairness of the competition.

- 16.5** In addition, the race committee may shorten the course so that other scheduled races can be sailed or abandon the race because of an error in the starting procedure. However, after one boat has sailed the course and finished within the time limit, if any, the race committee shall not abandon the race without considering the consequences for all boats in the race or series.
- 16.6** If the race committee signals a shortened course (displays flag S with two sounds), all boats shall round Southern Seas to Starboard and cross the finish line as per SI 14.1. The shortened course shall be signalled before the first boat crosses the finishing line.

17 Protest and Requests for Redress

- 17.1** Protests forms shall be available at the Race Office. Protests shall be delivered there within two (2) hours of the last boat's finishing time or, where multiple races are held, the finishing time of the last boat of that class in its last race of the day.
- 17.2** Notices will be posted on the official notice board within 30 minutes of the Protest Time Limit to inform competitors of hearings in which they are parties or named as witnesses.

18 Arbitration

- 18.1** An arbitration hearing will be conducted for all protests lodged in accordance with rule 61 which allege an infringement of a rule of Part 2 or 4. Such hearings will be held subsequent to the protest being lodged and prior to the protest hearing.
- 18.2** The time and place of the arbitration hearing will be decided by the arbitrator and such advice may be given verbally. One representative of each boat shall attend the arbitration hearing and no witnesses shall be allowed. The arbitrator shall decide the manner in which testimony is given.
- 18.3** After taking testimony at an arbitration hearing, the arbitrator shall make one of the following conclusions:
- a) The protest does not comply with rule 61 and the protestor may withdraw the protest.
 - b) The matter shall proceed to a protest hearing.
 - c) No rule was broken and the protestor may withdraw the protest.
 - d) A rule was broken by one or more of the boats involved, the infringing boat(s) may accept scoring points equal to a finishing place mid-way between the boat's actual finishing place and a disqualification, and if so accepted, the protestor shall withdraw the protest. (Half points shall be disregarded and the points of other boats shall not be adjusted).
- 18.4** An arbitration hearing shall not be re-opened. No conclusion of an arbitrator shall be subject to appeal or be grounds for redress.
- 18.5** Should the protest proceed to a protest hearing, then the arbitrator may be a member of the Protest Committee. Any evidence given by an arbitrator during a protest hearing shall be given only in the presence of the parties to the hearing.

19 Scoring

- 19.1** Races for consistency points will be scored using the Bonus Point scoring system of RRS Appendix A. The final result will exclude the two worst scores. Other series will be scored using the Low Point scoring system of RRS Appendix A, where each yacht shall exclude their worst score, although, if only 4 (four) heats or less are completed, all are to count. In the case of a DNS, DNF or DSQ, the score will be the maximum fleet size plus 1. (ie; 10 boats in the fleet = 11 points).
- 19.2** Change of Helmsperson – Each yacht shall sail with at least 50% of its normal crew, of which one must helm.
- 19.3** For boats competing in approved events – Flag officers and members who miss races because of club or class commitments may apply to the sailing committee, in writing, to have average points awarded for the missed races. Such application shall be made within one (1) week of the missed race.

- 19.4 For mixed classes races, the Race Committee reserves the right to apply a Mixed Class Correct Factor (MCCF) to the results as per the Australian Sailing Dinghy Yardstick Guidelines.

20 Radio Communication

- 20.1 All communication between Senior Race Officer, Senior Class Support boats, GBYC Tower & Keel Boats will be broadcast on VHF CH 73.
- 20.2 All communication between Junior Race Officer, Junior Class Support Boats & GBYC Tower will be broadcast on VHF CH 77
- 20.3 A boat shall neither make radio transmissions while racing nor receive radio communications that are not available to all other competing boats. This restriction also applies to mobile telephones.

21 Prizes

Prizes for series will be awarded to all classes in proportion to the number of boats starting in each series. The committee will determine which classes are awarded prizes for each series.

22 Disclaimer of Liability

Competitors participate in the Sailing Season entirely at their own risk. See rule Rule 3 'Decision to Race' which states "the responsibility for a boat's decision to participate in a race or to continue racing is hers alone".

23 Insurance

Each participating boat shall be insured with valid third-party liability insurance with a minimum cover of \$10 million per event or the equivalent.

Skippers are required to submit a current third-party liability Certificate of Insurance to GBYC prior to the commencement of the 1st Race on 2nd October 2021. No Insurance No Start.

24 Racing Safety Requirements

24.1 Safety Equipment Audits

Prior to the commencement of a competing boats 1st race in the GBYC Sailing Calendar season, it is the skipper's responsibility to complete, sign and provide a copy of the relevant Equipment Audit form as described below:

Off The Beach (OTB) Boats:

Skippers of Off The Beach (OTB) boats are to complete the latest version of Australian Sailing Special Regulations Part 2 Equipment Audit Form – Off the Beach Boats

Division 1, 2 & Shorthanded Division (Keelboats and Multi Hulls):

All cabin boats and fixed keel crafts shall comply with Australian Sailing "Racing Rules of Sailing" Special Regulations Part 1 For Racing Boats', to a minimum of Category 6 safety requirements. It is the responsibility of skipper's to complete the latest version of Australian Sailing (AS) Special Regulations Equipment Audit Form - Category 6

- 24.2 GBYC is committed to the safety of it's members and visitors. Therefore, the GBYC Management Committee have adopted the following Policy:

'NO BOAT SAFETY EQUIPMENT AUDIT FORM NO START'

24.3 PFDs

Off The Beach (OTB) Boats

All skippers and crewpersons shall wear, while on the water, a Personal Floatation Device (PFD), in good repair, secured about their persons in a manner appropriate to the design of the garment. The PFD must comply with the Australian Sailing "Racing Rules of Sailing", 'Off the Beach Boats_Audit Form'

Division 1, 2 (Keelboats and Multi Hulls):

PFD's shall be worn at times on cabin boats and fixed keel craft. The PFD shall comply with Australian Sailing Special Regulations.

Short Handed Division (Keelboats and Multi Hulls):

PFD's shall be worn at times.

24.4 Number of Crew for Shorthanded Division

- Minimum of 2 crew
- Maximum number of crew per yacht shall be determined by the length of the yacht as follows:
 - Less than 30 feet = 2 crew
 - 30 to 40 feet = 3 crew
 - More than 40 feet = 4 crew.

24.5 All boats competing in the passage series (Meelup race and Dunsborough race) shall carry a motor and enough fuel enabling them to return to the club or Port Geographe Marina unaided and they shall carry a 27MHz or VHF radio.

24.6 In mixed fleet racing, Rule 49.1 does not apply to classes sailing in accordance with their class rules.

25 Handicap and Yardstick Calculations

Handicap and Yardsticks will be calculated and adjusted as required by the Sailing Committee and the Club Handicapper. If any yacht wishes a revision of handicaps or yardsticks, they must apply in writing or email to the Sailing Committee with supporting evidence of their claim.